



2 THE PIGHTLE, NORTH COVE

NR34 7PR



This impressive and beautifully presented chalet bungalow has been extensively renovated and enhanced by the current owners, creating a stylish and versatile home ideally suited to modern living.

The property is approached from the front into a welcoming porch, which opens directly into a stunning open-plan kitchen, dining and family room. This superb space features a vaulted ceiling, enhancing the sense of light and volume, and forms the heart of the home.

From here, there is access to a practical utility room, as well as a further door leading through to a separate reception room with stairs rising to the first floor. The reception room provides access to a spacious, double-aspect sitting room and also to a well-appointed ground floor bathroom.

Positioned to the rear of the property is a generous bedroom suite comprising a bedroom, dressing room and en-suite bathroom. This area offers excellent flexibility and could be reconfigured to suit a variety of uses, subject to a purchaser's needs.

To the first floor, there are three further bedrooms along with a family bathroom, providing ample accommodation for family living or guests.

Outside, the property continues to impress. The rear garden offers a range of attractive features, including a fully insulated studio, a covered seating area ideal for entertaining, and a dedicated space suitable for a hot tub. To the front, a driveway provides off-road parking, complemented by an additional area of lawn.

North Cove is well positioned for access to the market towns of Beccles and Lowestoft, with further connections on to Norwich, making this an ideal location for both commuters and those seeking a well-connected village setting.

SERVICES

All mains services are connected. (Durrants has not tested any apparatus, equipment, fittings or services and so cannot verify they are in working order.)

TENURE

Freehold.

LOCAL AUTHORITY

East Suffolk Council. Council Tax Band – D (please note that there is an improvement indicated



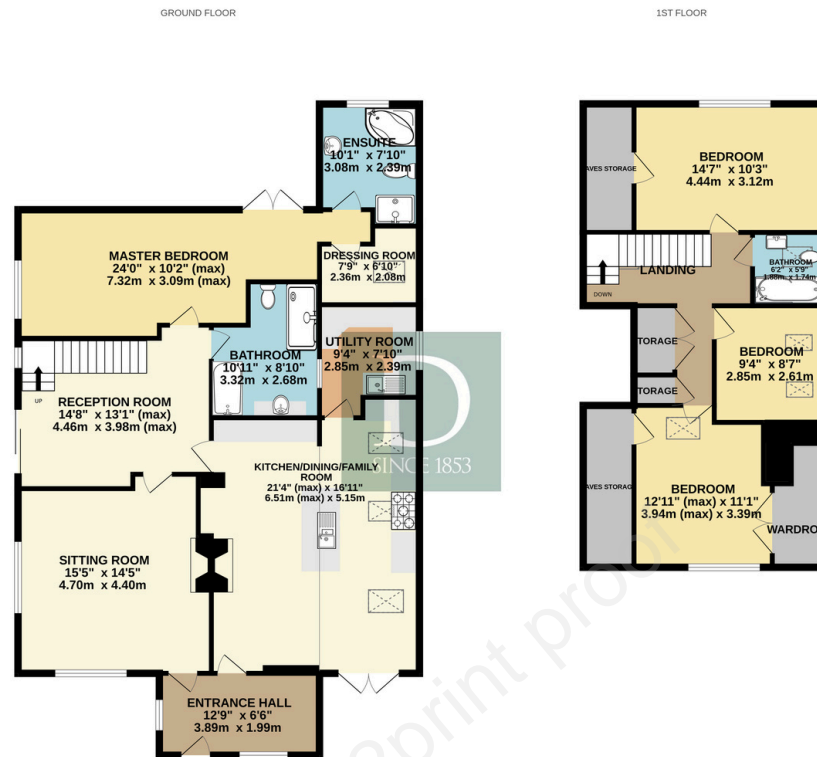


FULLY
RENOVATED





FLOOR PLAN



Whilst every attempt has been made to ensure the accuracy of the floorplan contained here, measurements of doors, windows, rooms and any other items are approximate and no responsibility is taken for any error, omission or mis-statement. This plan is for illustrative purposes only and should be used as such by any prospective purchaser. The services, systems and appliances shown have not been tested and no guarantee as to their operability or efficiency can be given.
Made with Hectopix 6/2025

Residential Agricultural Commercial On Site Auctions Property Management Building Consultancy Auction Rooms Holiday Cottages

IMPORTANT NOTICE

Durrants and their clients give notice that:

- 1.They are not authorised to make or give any representations or warranties in relation to the property either here or elsewhere, either on their own behalf or on behalf of their client or otherwise. They assume no responsibility for any statement that may be made in these particulars. These particulars do not form part of any offer or contract and must not be relied upon as statements or representations of fact.
- 2.Any areas, measurements or distances are approximate. The text, photographs and plans are for guidance only and are not necessarily comprehensive. It should not be assumed that the property has all necessary planning, building regulation or other consents. Durrants have not tested any services, equipment or facilities. Purchasers must satisfy themselves by inspection or otherwise.

CONTACT US

Durrants, 10 New Market, Beccles, Suffolk, NR34 9HA

Tel : **01502 712122**

Email : **beccles@durrants.com**

